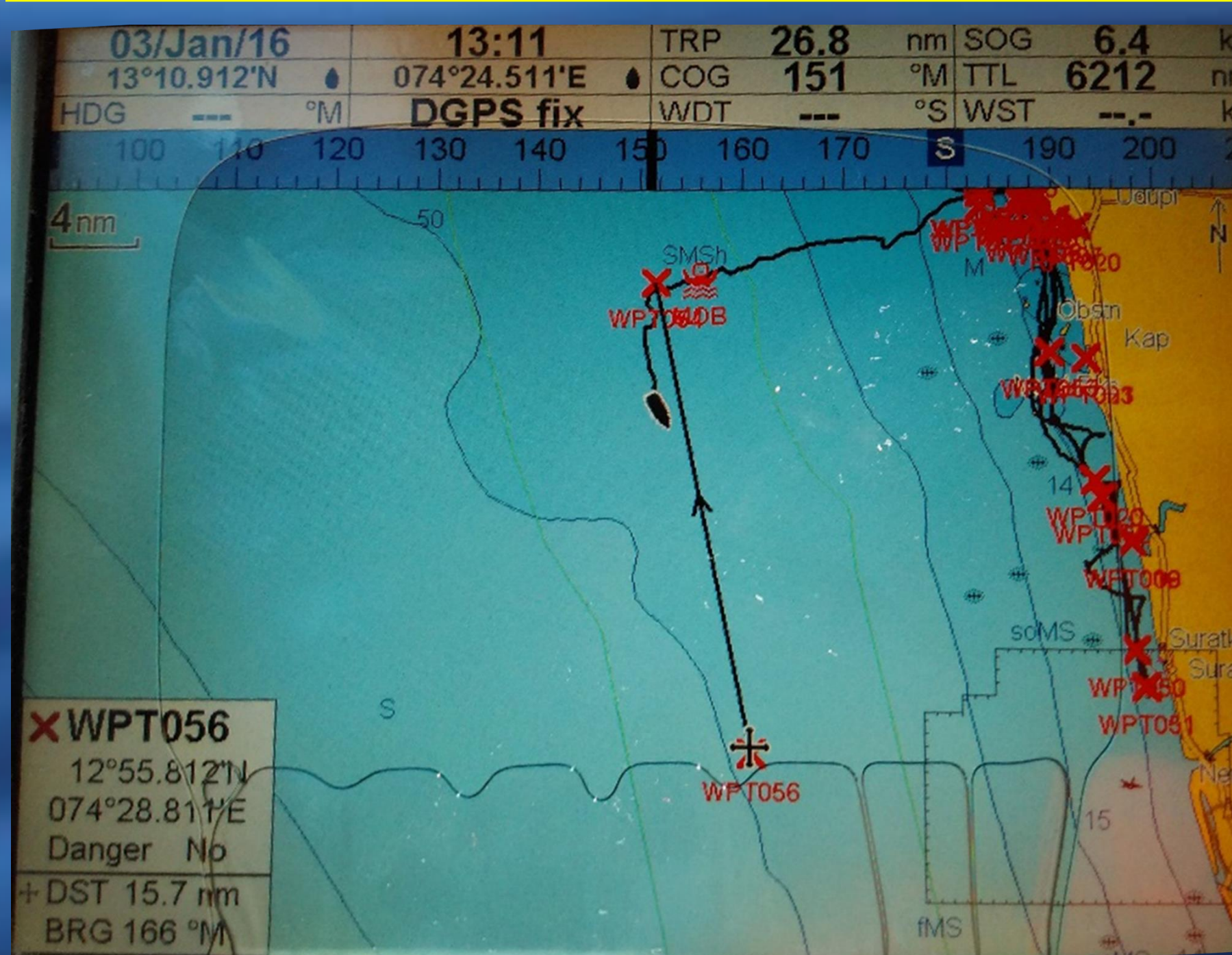




# PELAGIC BIRDS OF WEST COAST

## -UDUPI AND MANGALORE-



Harish Bhat R<sup>1</sup>, Shivashankar M<sup>2</sup>, Vineeth Kumar K<sup>3</sup> & Karthik Bhat P<sup>4</sup>.

<sup>1</sup> Energy and Wetlands Research Group, Centre for Ecological Sciences, Indian Institute of Science, Bangalore 560012  
<sup>2</sup> Sarasvath nagar, Karkala 576117, Karnataka

<sup>3</sup> Department of Applied Zoology, Mangalore University, Mangalore 574199

<sup>4</sup> #27/1, Jayadeep Nivas, Kudvas Compound, Kuntalpadu, Karkala 574104

- Any water in a sea or lake that is neither close to the bottom nor near the shore can be said to be in the pelagic zone.
- Pelagic birds, also called oceanic birds, live on the open sea, rather than around waters adjacent to land or around inland waters.
- These birds migrate from far distance during winter from temperate to tropics to escape the harsh weather.
- Their arrival also indicates the change in climatic condition at the temperate countries. Their presence supports the favourable environment with less disturbances.



**Black Headed Gull**

*Chroicocephalus ridibundus*

**Black Headed Gull**

**Specifications**

- Breeds in Coastal Canada, Europe and Asia.
- 38–44 cm long with a 94–105 cm wingspan.
- Leading edge to the wing is a good field mark.
- Chocolate-brown head, pale grey body, black tips to the primary wing feathers, and red bill and legs
- Bold and opportunistic feeder.



**Gull-billed tern**

*Gelochelidon nilotica*

**Brown Headed Gull**

**Specifications**

- Breeds in the high plateaus of central Asia from Tajikistan to Ordos in Inner Mongolia.
- Pale brown head, lighter than that of black-headed, a pale grey body, and red bill and legs, black tips to the primary wing, underwing is grey with black flight feathers
- Brown hood is lost in winter, leaving just dark vertical streaks



**Brown Headed Gull**

*Chroicocephalus brunnicephalus*




**Parasitic jaeger (Arctic skua)**

*Stercorarius parasiticus*

**Parasitic jaeger**

**Specifications**

- Breeds in the north of Eurasia and North America.
- 41–48 cm in length, 107–125 cm in wingspan.
- White underparts and dark primary wing feathers. Fore head and neck are yellowish-white



**Arctic skua chasing the Greater crested tern**

**Gull-billed tern**

**Specifications**

- Breeds in warmer parts of the world in southern Europe, temperate and eastern Asia, both coasts of North America, eastern South America and Australia
- 33–42 cm in length and 76–91 cm in wingspan.
- short thick gull-like bill, broad wings, long legs and robust body



**Swinhoe's Storm-petrel**

*Hydrobates monorhis*



**Heuglin's gull (Siberian gull)**

*Larus heuglini*

**Heuglin's gull**

**Specifications**

- Breed in the tundra of northern Russia from the Kola Peninsula east to the Taymyr Peninsula.
- Large gulls with a rounded head, strong bill and long legs and wings.
- 53 to 70 cm long, wingspan 138 to 158 cm
- Legs are usually yellow but can be pink.
- Heavier streaking on the hindneck



**Greater crested tern**

**Specifications**

- Breeds on many islands in the Indian Ocean, Aldabra and Etoile in the Seychelles, the Chagos Archipelago, and Rodrigues
- 5.4–6.5 cm yellow bill, black legs, and a glossy black crest, 125–130 cm wingspan.
- forehead and the underparts are white, the back and inner wings are dusky-grey

**Swinhoe's Storm-petrel**

**Specifications**

- Breeds on islands in the northwest Pacific off China, Japan and Korea.
- 18–21 cm in length with a 45–48 cm wingspan.
- Dark brown in all plumages, and has a fluttering flight.
- Planktonic food.



**Wilson's Storm-petrel**

*Oceanites oceanicus*



**Whiskered tern**

*Chlidonias hybrida*

**Whiskered tern**

**Specifications**

- Breed in warmer parts of Europe and Asia
- Sides of the neck are white, this sometimes continues across the nape.
- Bill 25 – 34 mm.
- Collar is less sharply defined.



**Greater crested tern**

*Thalasseus bergii*



• Coastal Security Police Department, Udupi

• Shri Chennabasavanna IPS, SP, Coastal Security Police